



CA-660: SIMPLE TO USE.
STRONG IN DIAGNOSTICS.



CA
CA

COAGULATION TESTING IS INCREASINGLY IMPORTANT.

Cardiovascular diseases (CVD) are the leading cause of death and disability in the world. And this is not likely to change any time soon, considering the demographics and lifestyle we see today. Those with cardiovascular disease have the best chances when their illness is detected early. And labs that offer coagulation testing can really help.*

COAGULATION TESTING YOU CAN RELY ON

The CA-660** is a compact, fully automated coagulation analyser that combines proven and successful characteristics – such as the optical detection technology and the reagent system of its predecessors – with new features. In addition to routine testing, it also offers specialty coagulation testing such as D-dimer and vWF activity, and so provides a complete patient profile. It is an attractive choice as a primary analyser for low-volume haemostasis laboratories, but you can equally use it as a powerful backup instrument in a larger lab. The CA-660 has a solid construction, is hard-wearing and robust. And with its reliable performance, it will support you day in, day out, for years to come.

The CA-600 series models are based on SILENT DESIGN®, Sysmex's concept that contributes to a more enjoyable workplace experience by putting people first and optimising the interaction between the individual and the devices they use day in, day out.

A RELIABLE PARTNER FOR YOUR LAB

Sysmex is a total solution provider for laboratories of all sizes around the world. With over forty years' experience in lab haematology, and almost thirty creating coagulation analysers, our solutions meet real laboratory and user needs – from the smallest detail to large-scale workflow design. With representative sites in nearly all countries, our supply and service are leading in our field.

We present a wide range of scientific articles on coagulation and other fields of interest – from basic introductions to specific topics in our 'SEED' (Sysmex Educational Enhancement and Development) database. These can help you optimise your lab testing and interpret the analysers' results, and in doing so offer patients the best clinical care. Your local Sysmex representative can tell you more.

STRONG PERFORMANCE, HIGH QUALITY RESULTS

The CA-660 runs all clinically important clotting, chromogenic and immunological analyses. In addition to routine tests, this means you can also perform a wide range of specialty testing to further investigate haemostatic disease status and perform fibrinolysis tests.

The CA-660 offers added clinical value and can perform a fully automated, precise D-dimer determination. This can help you monitor patients and rule out critical conditions in a wide range of coagulopathies.* This test is classically used for excluding deep venous thrombosis and pulmonary embolism. It is also useful for managing the increased risk of thrombosis in HIV patients undergoing retroviral treatment. This means your results can now contribute even more effectively to patient care as you can relate them to disease prognosis.

SIMPLIFYING DAILY LABORATORY WORK

Thanks to a colour LCD touch screen and an integrated barcode reader, the CA-660 is safe and easy to use. Automated sample identification makes sure the right tests are performed on the right samples. It also eliminates the need for sample batching, which reduces the turnaround time. The device also offers optimised turnaround times for D-dimer analyses and calibrations and because it's so easy to use helps minimise the risk of errors.

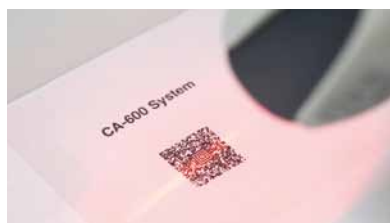
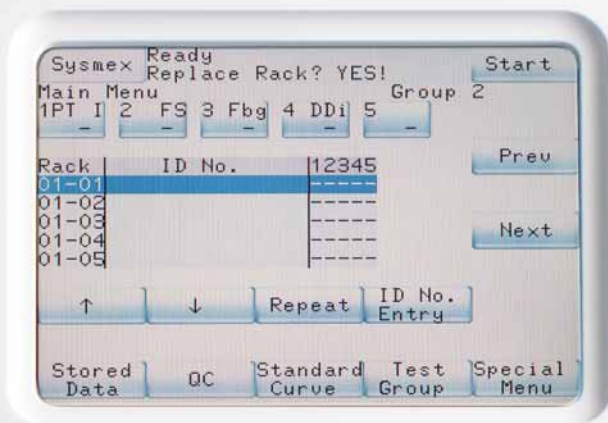
Maintenance requirements are low, which ensures the system operates efficiently with little downtime. Integrated reagent cooling increases on-board reagent stability. And thanks to a range of sensor functions, the system is particularly safe to operate.

SET FOR TODAY, AND FOR TOMORROW. ADVANCED SOFTWARE, DATA HANDLING AND NETWORKING

The CA-660 is easy to service thanks to its error log capacity and a new type of memory card. It's easier to set up and update the analyser, and to back up and restore user data and settings.

Using an optional hand-held 2D barcode reader, you can register reagent, standard and control data safely, simply and quickly and further improve your lab's productivity. This reagent management system and positive sample recognition will also help you meet the growing regulatory demands with respect to documentation, accreditation and traceability.

The CA-660 can help you and your lab stay one step ahead: via a dedicated interface, you can connect it to SNCS, Sysmex's online services, which will offer a range of innovative service support processes.



*For more information on specific topics please go to www.sysmex-europe.com/coagulation

**In certain countries the CA-650 model is available instead of CA-660. Apart from different detector wavelengths adapted to the reagents used only in those countries, both models are identical.

SPECIFICATIONS

Detection principles	clotting: scattered light detection method chromogenics: colorimetric method immunoassay: latex-enhanced turbidimetric method
No. of detector channels	clotting: 4 channels chromogenics: 1 channel immunoassay: 1 channel
Parameters	
clotting	PT, APTT, Fbg, TT, Coagulation Factor Assays (II, V, VII, VIII, IX, X, XI, XII), Lupus Anticoagulant (screening and confirmation), Protein C, Batroxobin
chromogenics	AT III, Plasminogen, α 2-antiplasmin, Protein C, Heparin
immunoassay	D-dimer, vWF: Ag
Throughput	max. 60 tests per hour
Test protocols	up to 14 programmable
STAT	1 dedicated position
Sample volumes	min. 50 μ L (PT, APTT, TT) min. 10 μ L (Fbg, AT III) min. 5 μ L (factor assays) min. 8 μ L (D-dimer)
Auto-dilution function	for accurate measurement of abnormal fibrinogen or D-dimer levels
Reagent capacity	13 positions (4 cooled and 3 dedicated to diluents, buffers or cleaning reagents)
Quality control	xbar/L-J control: 6 files at 180 points, 14 parameters
Data storage	up to 600 samples/max. 3,000 tests
Interfaces	colour LCD touch screen (user interface) built-in thermal printer, prints data and graphics built-in barcode reader for samples and STAT 2D hand-held barcode reader for reagents (ISI, lot#, expiry date), calibrators (assigned value, lot#, expiry date), controls (target/limit, lot#, expiry date), samples/STAT (for sample search) (optional) SNCS capability (dedicated LAN port) LIS (serial)
Dimensions/weights	w x h x d [mm] / [kg]
main unit	566 x 490 x 490 / approx. 42

Design and specifications may be subject to change due to further product development.

© Copyright 2012 – Sysmex Europe GmbH

Sysmex Europe GmbH

Bornbarch 1, 22848 Norderstedt, Germany · Phone +49 40 52726-0 · Fax +49 40 52726-100 · info@sysmex-europe.com · www.sysmex-europe.com

Sysmex Corporation

1-5-1 Wakinohama-Kaigandori, Chuo-ku, Kobe 651-0073, Japan · Phone +81 78 265-0500 · Fax +81 78 265-0524 · www.sysmex.co.jp

Please find your local Sysmex representative address under www.sysmex-europe.com